

# SPC-3000 SERIES QUICK START MANUAL

"Please make sure to assemble the system in an anti-static environment."

## 1.1 How to Open Your SPC-3000

**Step 1** Turn over the SPC-3000 and put the upper side face down.



**Step 4** Remove one FHS-M3x4 screw (circled in red) on the right side.



**Step 2** Remove two FHS-M3x4 screws (circled in red) on the rear panel.



**Step 5** Take off the lower cover.

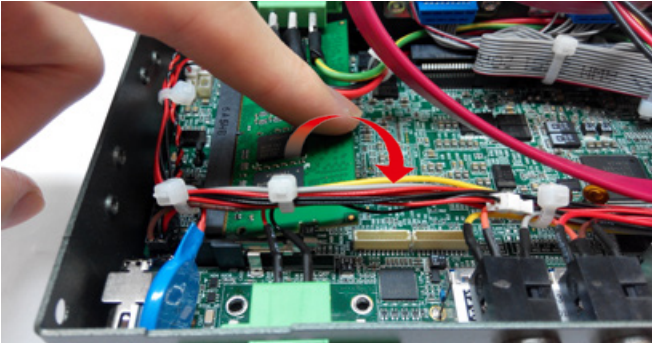


**Step 3** Remove one FHS-M3x4 screw (circled in red) on the left side.

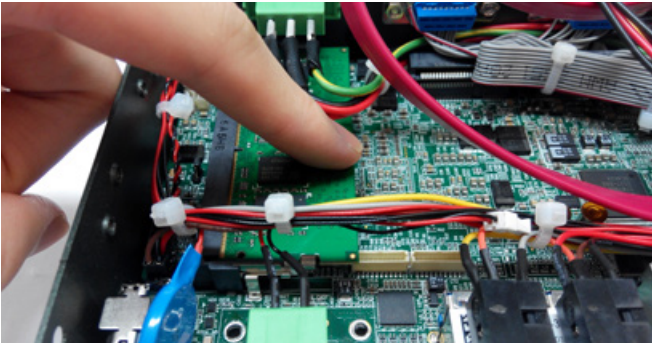


## 1.2 Installing DDR4 SO-DIMM Module

**Step 1** Install DDR4 RAM Module into SO-DIMM slot.

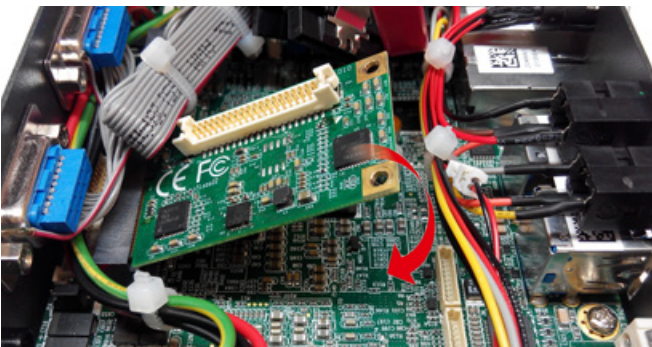


**Step 2** Make sure the RAM module is well-locked by the memory slot.

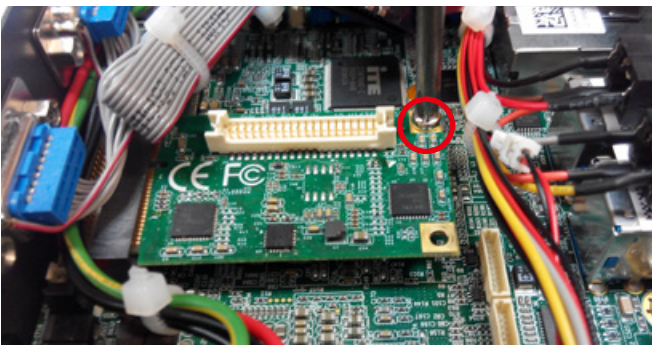


## 1.3 Installing Mini PCIe Card

**Step 1** Install Mini PCIe card into the Mini PCIe slot.



**Step 2** Fasten one M2.5 screw.



## 1.4 Installing SMA Antenna Cable

**Step 1** Check SMA antenna cable and washers.



**Step 2** Remove three rubber corks on rear panel. (Pick up the location you want.)



**Step 3** Put antenna cable connector into the hole on rear panel.



**Step 4** Fasten washer 1, washer 2, and washer 3 on antenna cable connector.

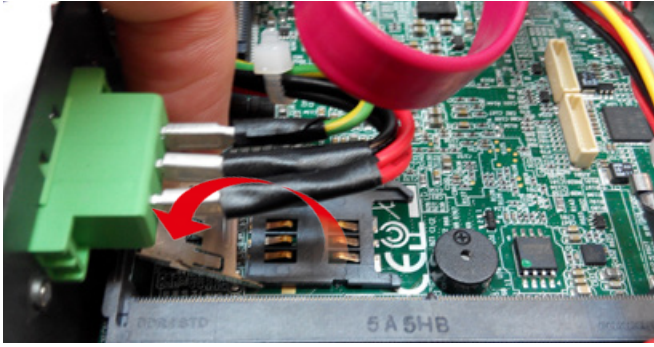


**Step 5** Antenna cable is ready.

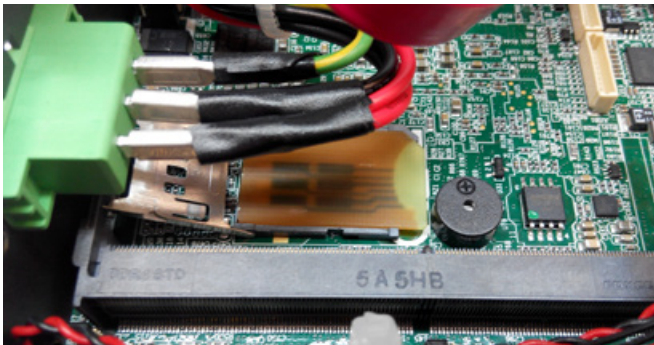


## 1.5 Installing SIM Card

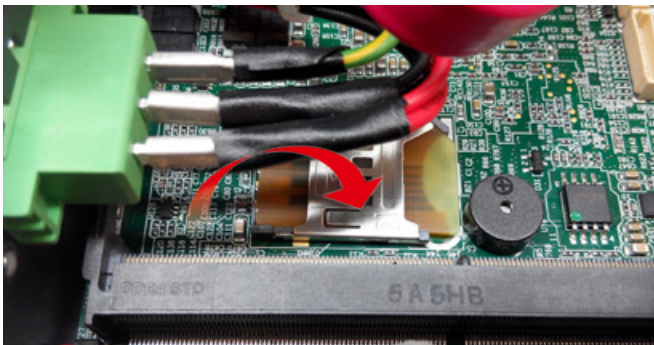
**Step 1** Unlock and open the cover of SIM card socket.



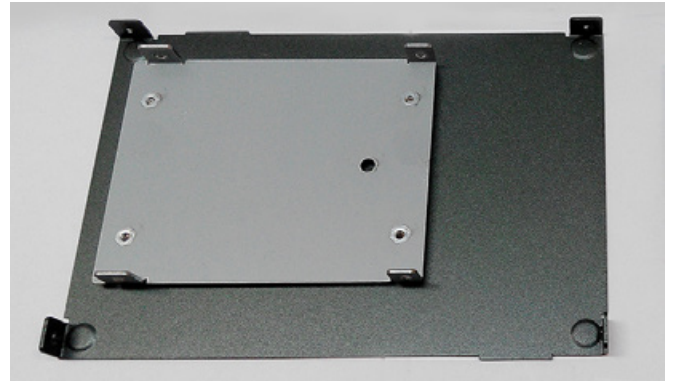
**Step 2** Install SIM card into SIM card socket.



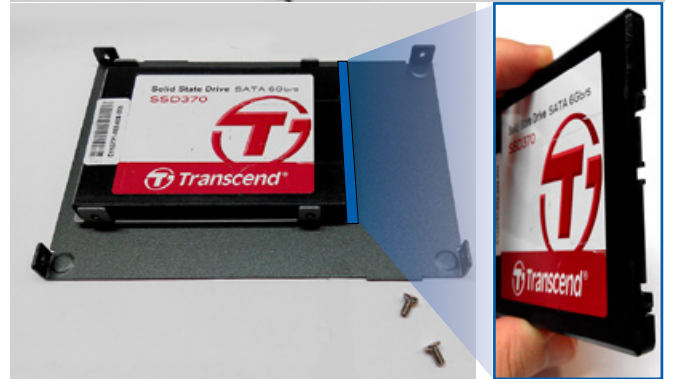
**Step 3** Close and lock the cover of SIM card socket.



**Step 2** Take the lower cover of SPC-3000 and put the inside face up.



**Step 3** Make sure the directions of SPC-3000's lower cover and SSD/HDD match.



## 1.6 Installing SSD/ HDD

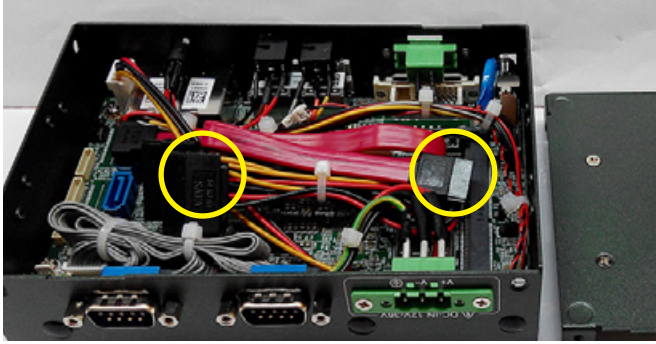
**Step 1** Open SPC-3000 and take off the lower cover. (Please refer to 1)



**Step 4** Fasten the four KH-M3x6 screws.



**Step 5** Find the SATA data cable and SATA power cable in SPC-3000.



**Step 6** Plug in SATA data cable and SATA power cable to SSD/HDD.



**Step 7** Put the lower cover back and fasten four KH-M3x6 screws.



## 1.7 Installing Wallmount Bracket

**Step 1** Ensure the screw holes on the left side and the right side of SPC-3000 match the ones on SPC-3000 wallmount bracket.



**Step 2** Fasten four KH-M3x6 screws on each side.

